

# Parts Manual

## Grouse Apple Harvester

Model Number: \_\_\_\_\_ Build

Date: \_\_\_\_\_ Chassis

Number: \_\_\_\_\_ Engine

Number: \_\_\_\_\_ Built by Pattenden

Machinery Ltd, Preston Cross, Ledbury, Hereford. HR8 2LJ Parts telephone  
number: \_\_\_\_\_

Website: \_\_\_\_\_ Basic Spec Guide Working

Dimensions

Capacities

Tyres

Oil Specifications & Capacities:

Engine          Hydraulic          Axles

Tyre Pressures (typical, pressures may be lower for softer ground) Minimum to avoid tyre damage.

# INDEX

**Head, drive components, brushes, belts**

**Basket & Operating Arms**

**Hydraulic Pump & Pipes**

**Engine, Engine Components, Filters & Covers**

**Rear axle view, diff lock/ cable, steering arms/rods**

**Brake disc, drive shaft and motor/pipes**

**Rear tyres and wheels**

**Rear mount for head, Main hydraulic pump**

**Hydraulic oil radiator and pipes**

**Apple Paddle, drive motor, pipes and rubber paddles**

**Head brush gear /bearings**

**Paddle arms, hoses, ancillary components**

**Steering head / steering joints / ancillary joints**

**Front wheel drive motor & hoses**

**Front mounted Hydraulic valves, front pipework layout**

**Steering wheel valve / valves / pipework & seat**

**Fuel tank and hydraulic tank**

**Drivers levers, valves, throttle, ignition box / pipework**

**Drivers forward / reverse mechanism and micro switch**

**Big wheel and cab models**

M50x12 bolt 8.8 +flatwasher+nylock nut

GR189

PB2729

GR010

GR087

PB8897

GR437\*

\*ram seal kits vary depending on number of black bands on ram.

Picture 1



PB8922

Bearing:  
GR277 or  
PB-8558

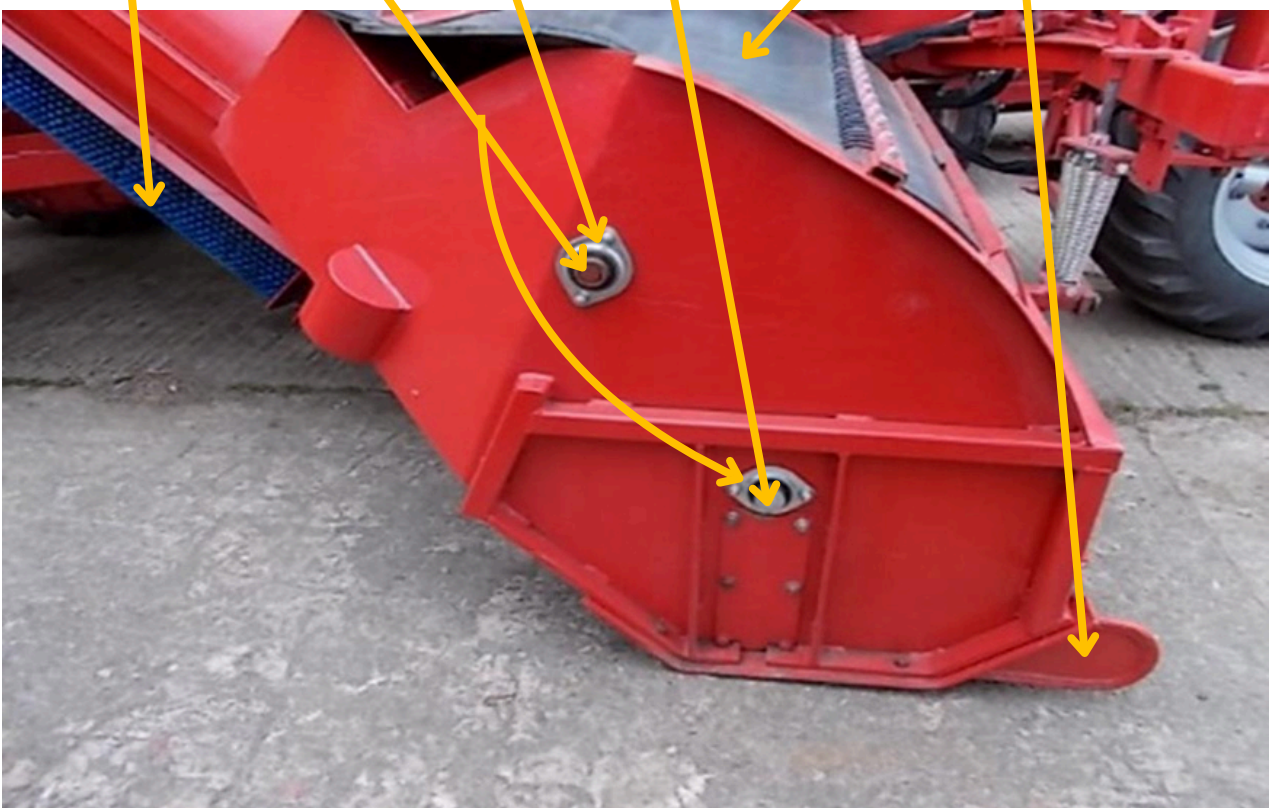
GR312  
(plates)

Shaft:  
GR176 or  
GR474

PB2558

GR189  
(Skid: not  
handed)

Picture 2





GR521 GR520 GR008 GR016 GR017 GR044 GR024 PB2558

Picture 3



GR012

GR422

GR388  
(rod)

GR422

Picture 4



**GR161**

**GR439**

**GR161**

Picture 5





Safety  
rubber

1

GR170

2

GR438

GR013

3

Picture 6



PB8893/  
1 or 2

GR388

GR297

Picture 7



**PB8893/  
1 or 2**

**GR016AP**

**PB8893/  
1 or 2**

Picture 8



**GR012**

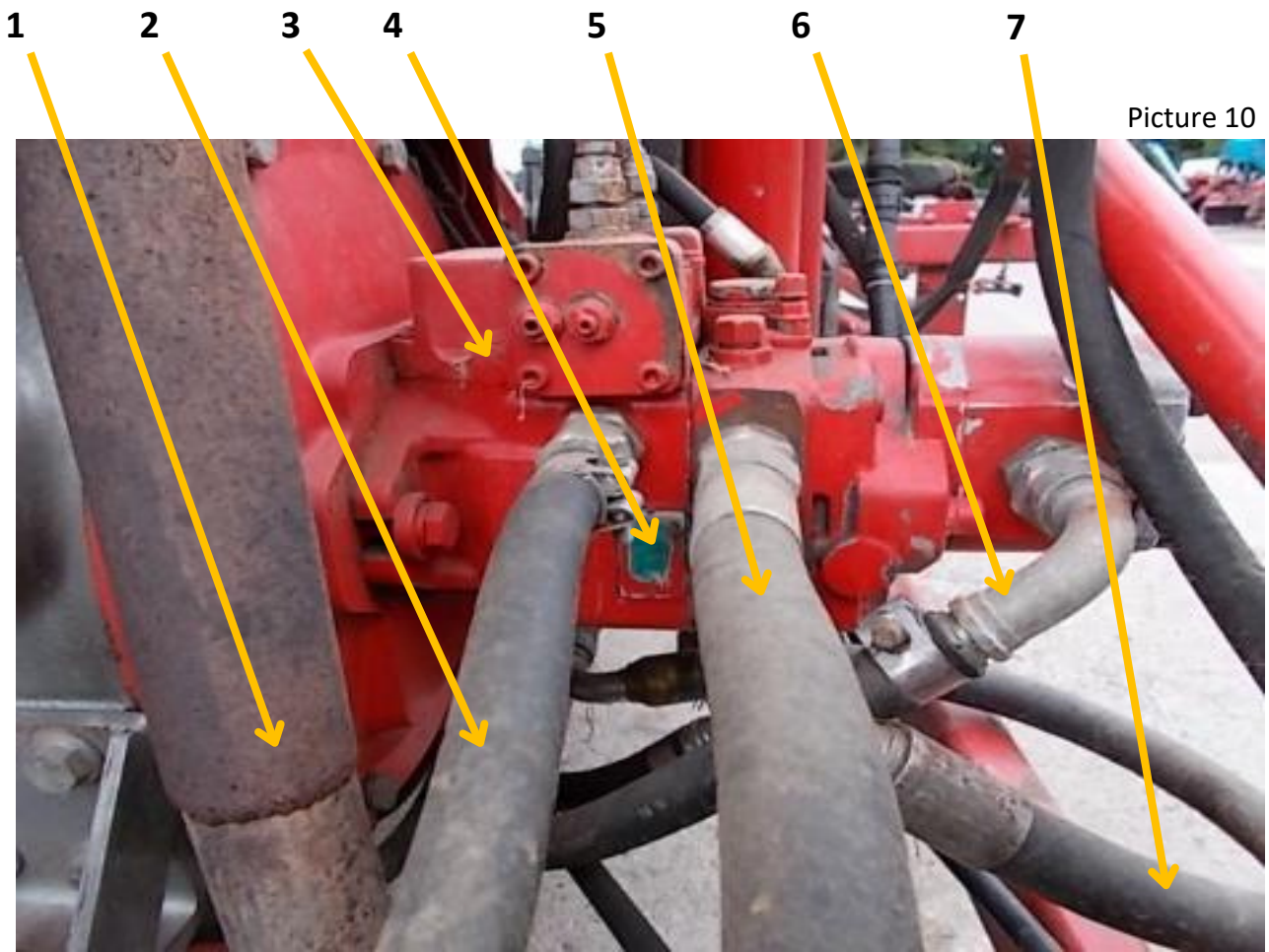
**GR060**

Picture 9

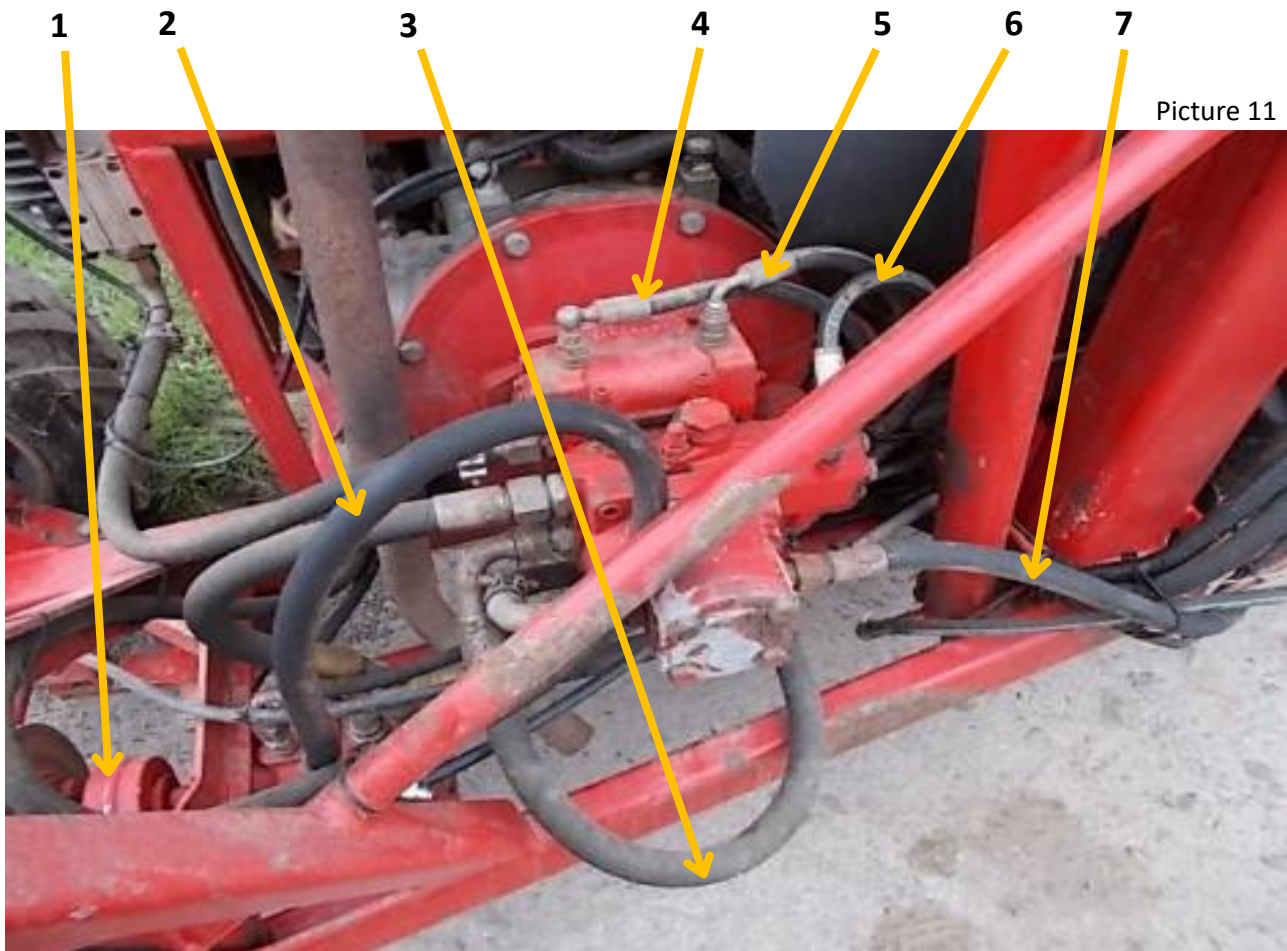




Picture 10



Picture 11





1

2

3

Picture 12



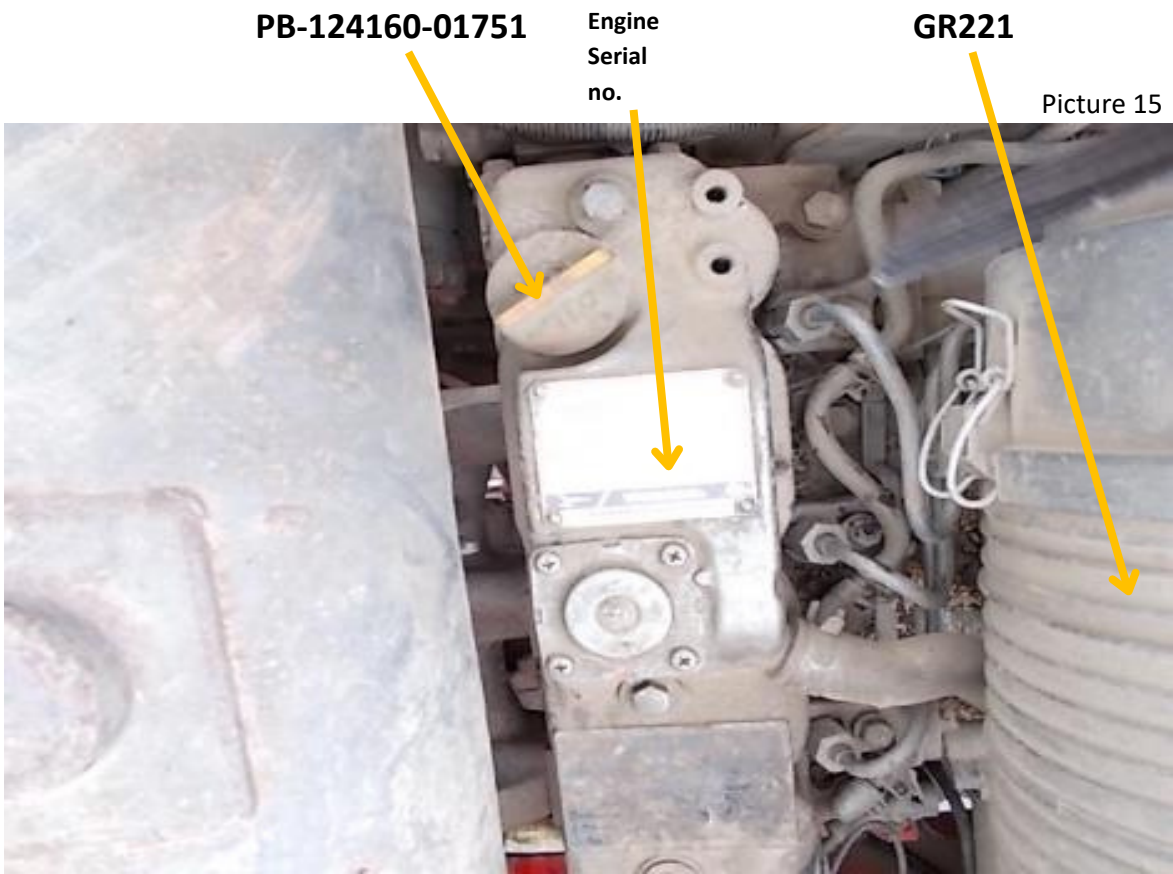
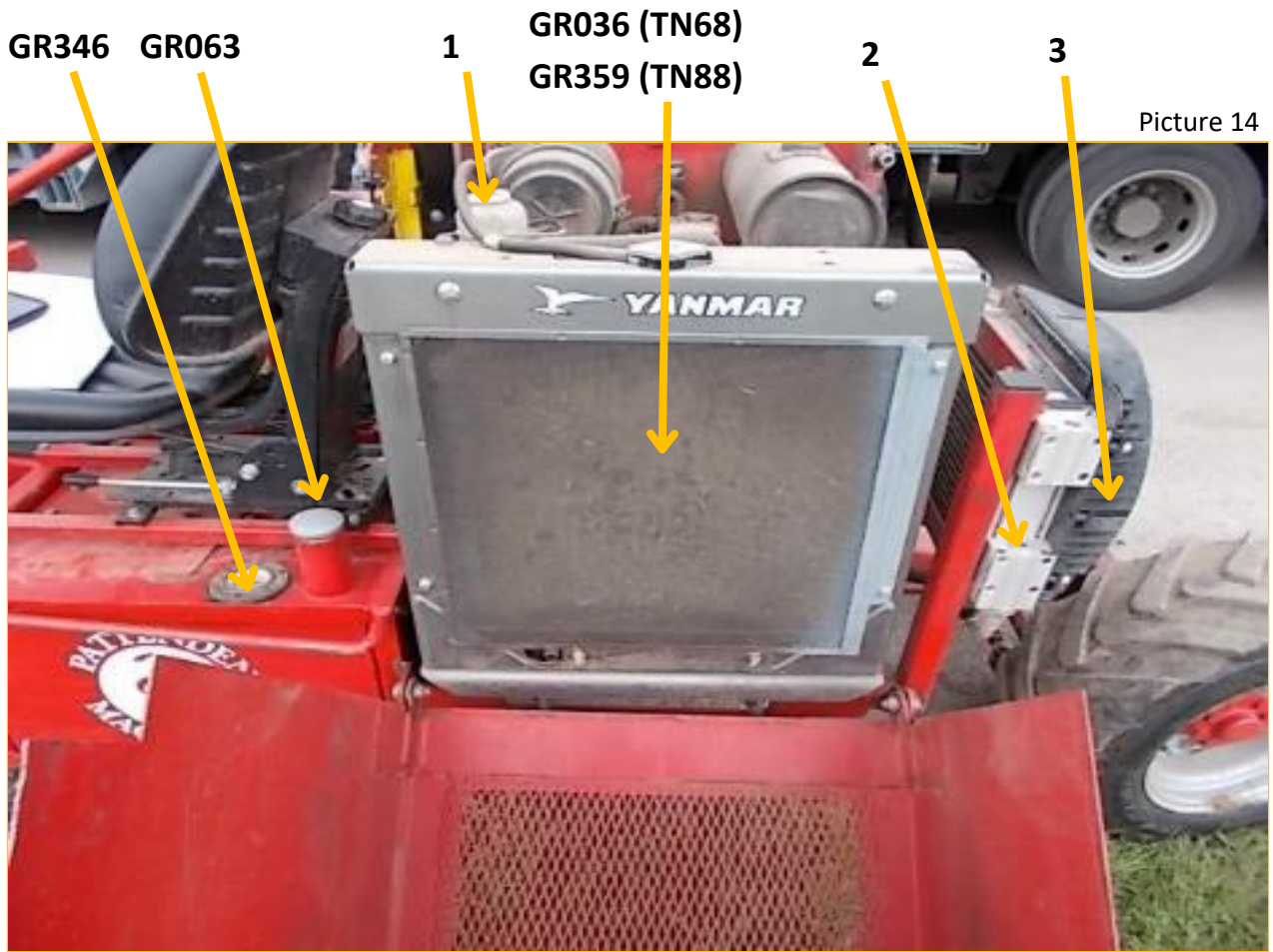
GR198

Catch

GR009

Picture 13





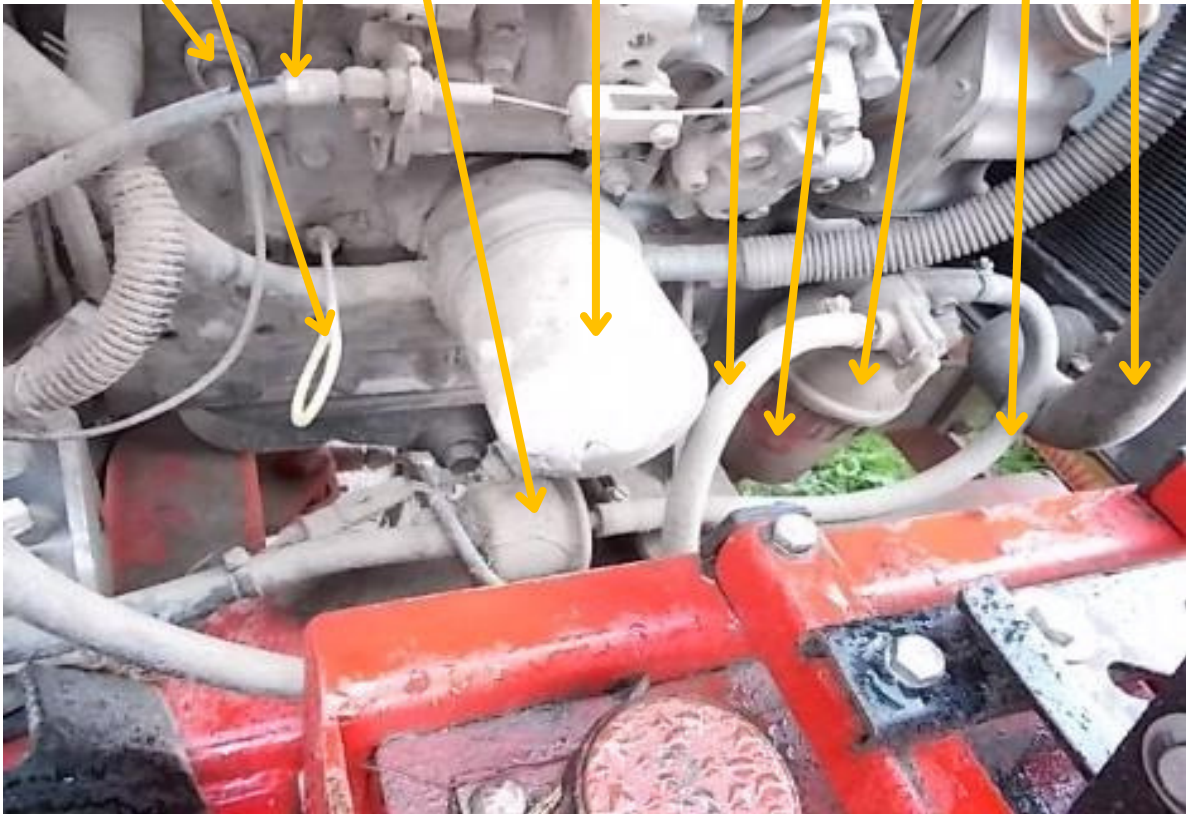


Picture 16



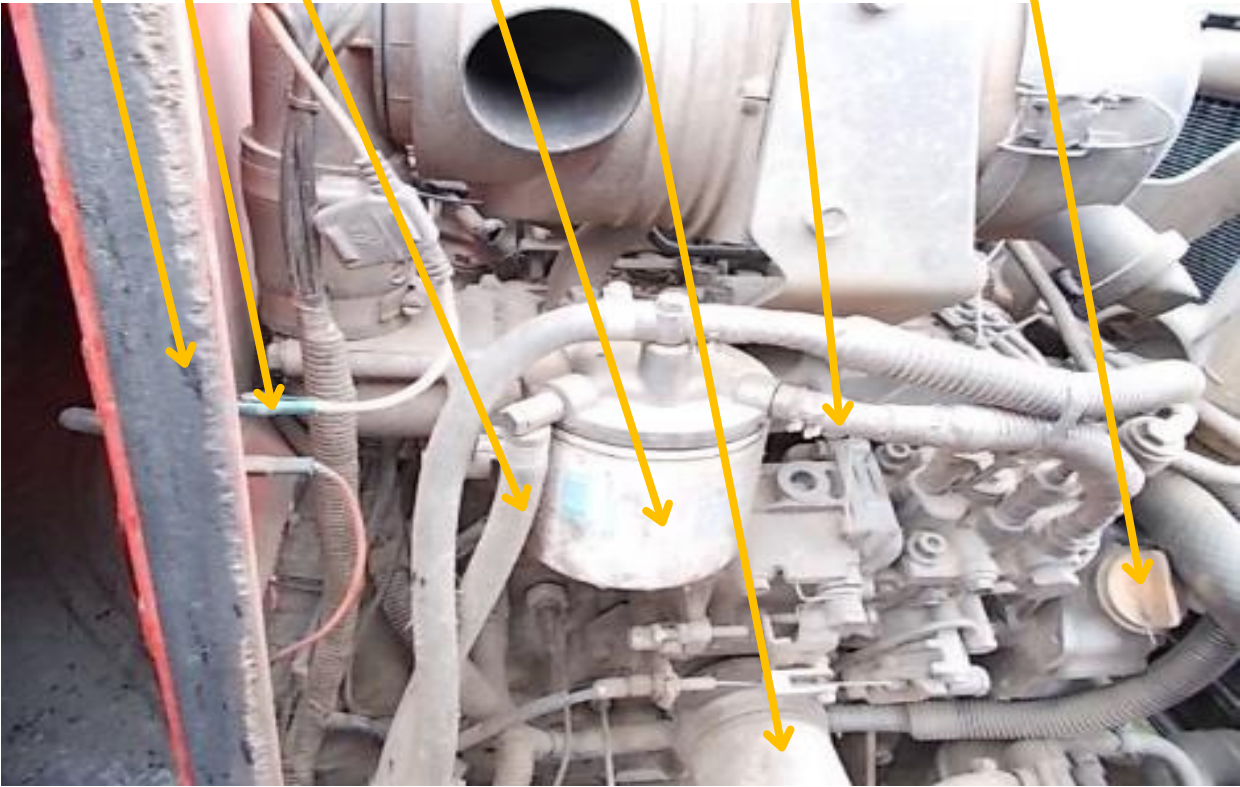
PB119620-34822  
PB117990  
PB8392  
1  
GR220  
(TN82)  
2  
3  
4  
5  
6

Picture 17



1 2 3 4 5 6 7

Picture 18



GR138

PB08122/1

GR372

GR317/  
416

Picture 19





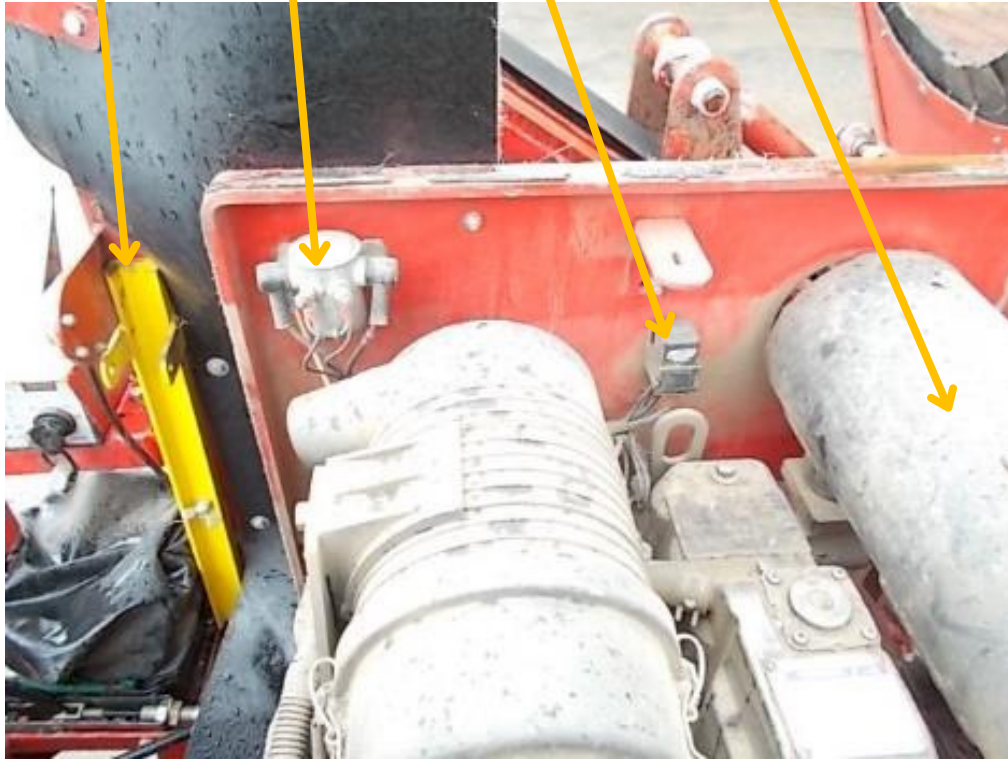
1

2

3

4

Picture 20



GR142

GR118

1

2

3

Picture 21



PB-BB049

1

2

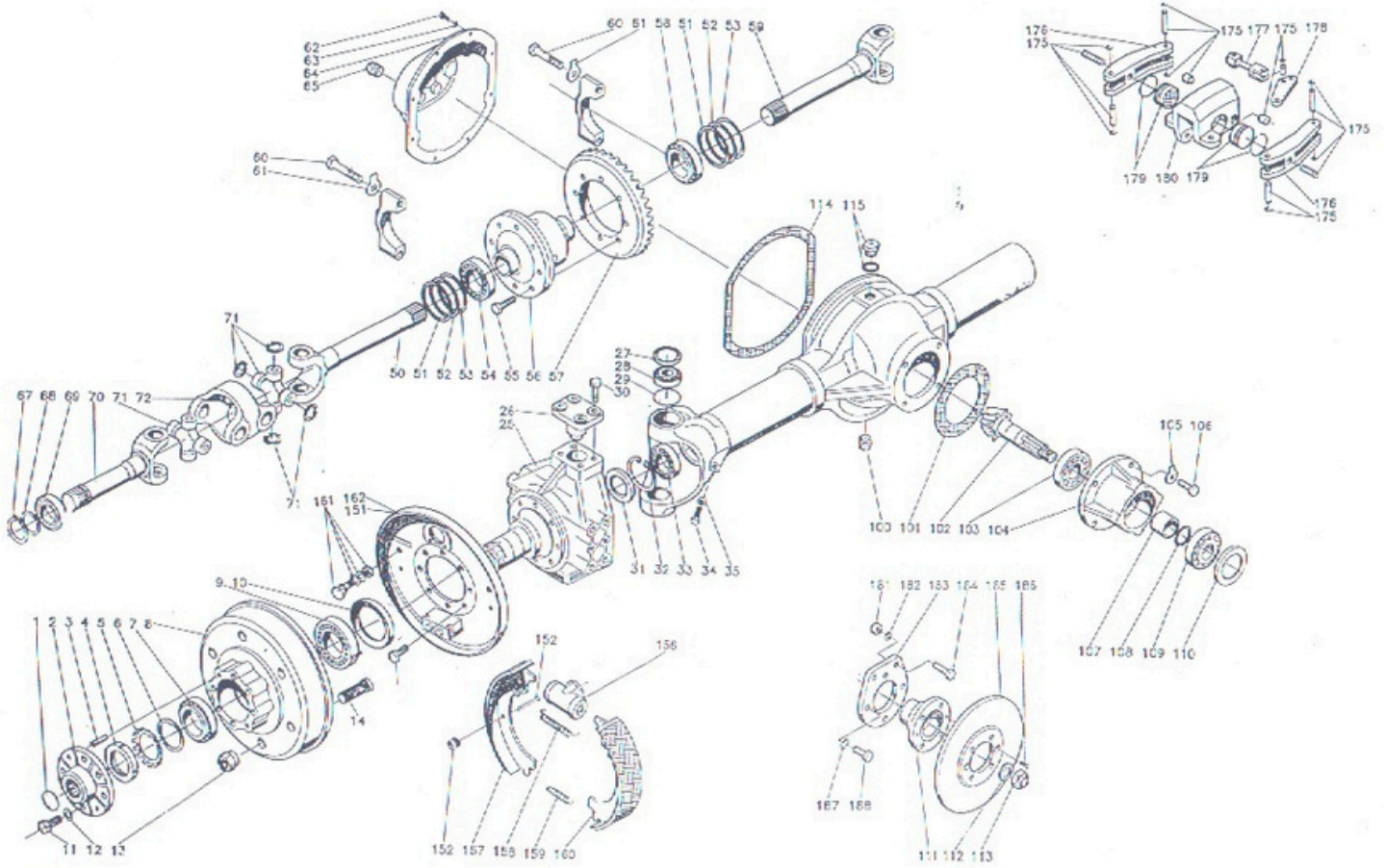
3

Picture 22



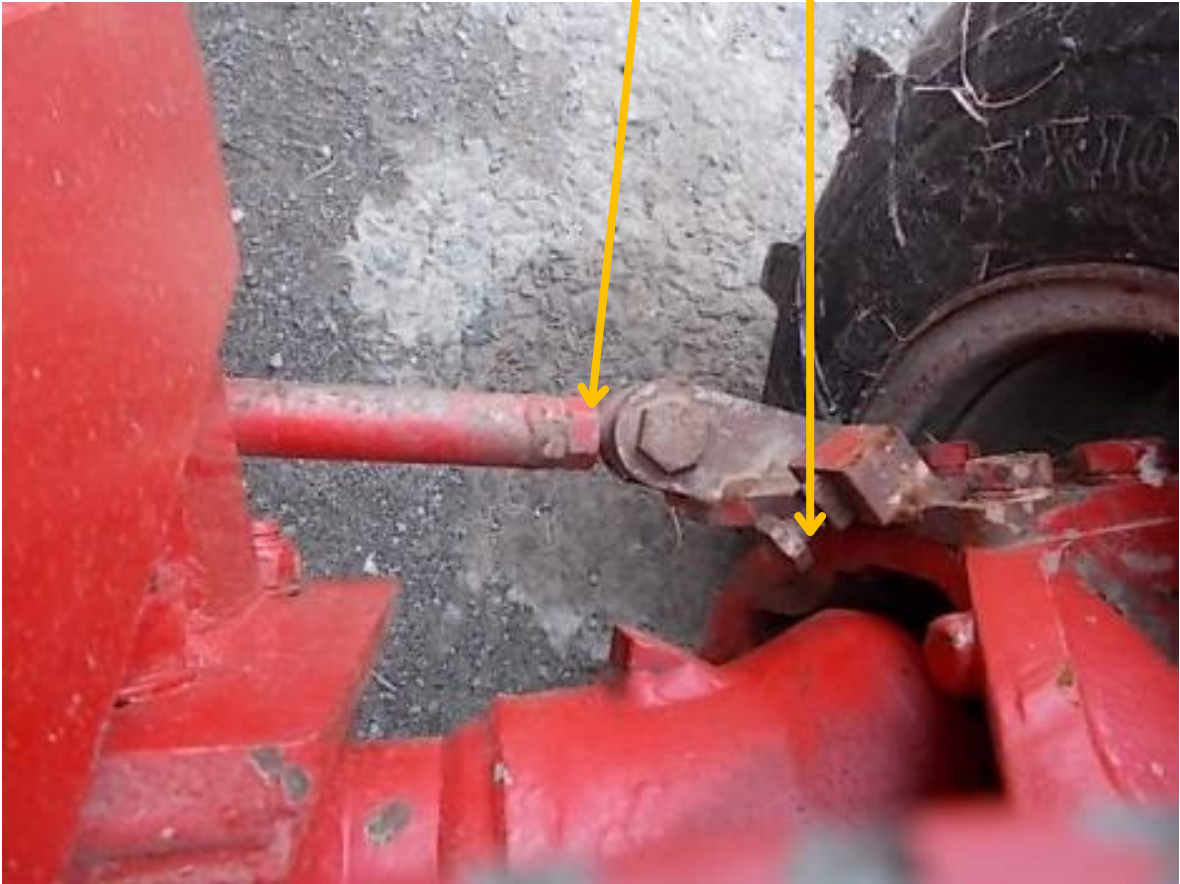


Picture 22a



PB-BB049 GR015

Picture 23



1 2 GR363 (seal)

Picture 24





1

see pic 26

GR071

2

Picture 25



GR106

GR110/  
GR111

GR112

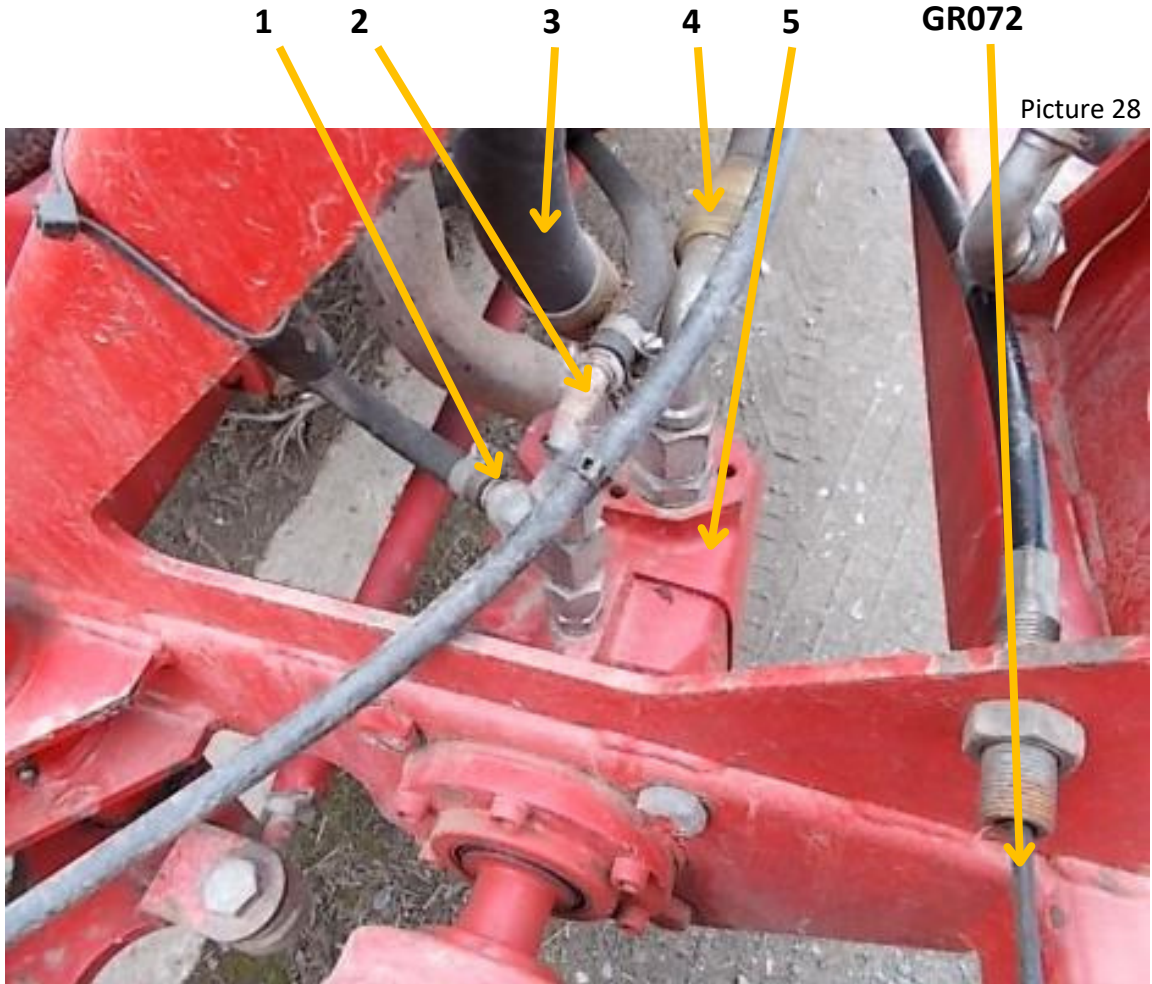
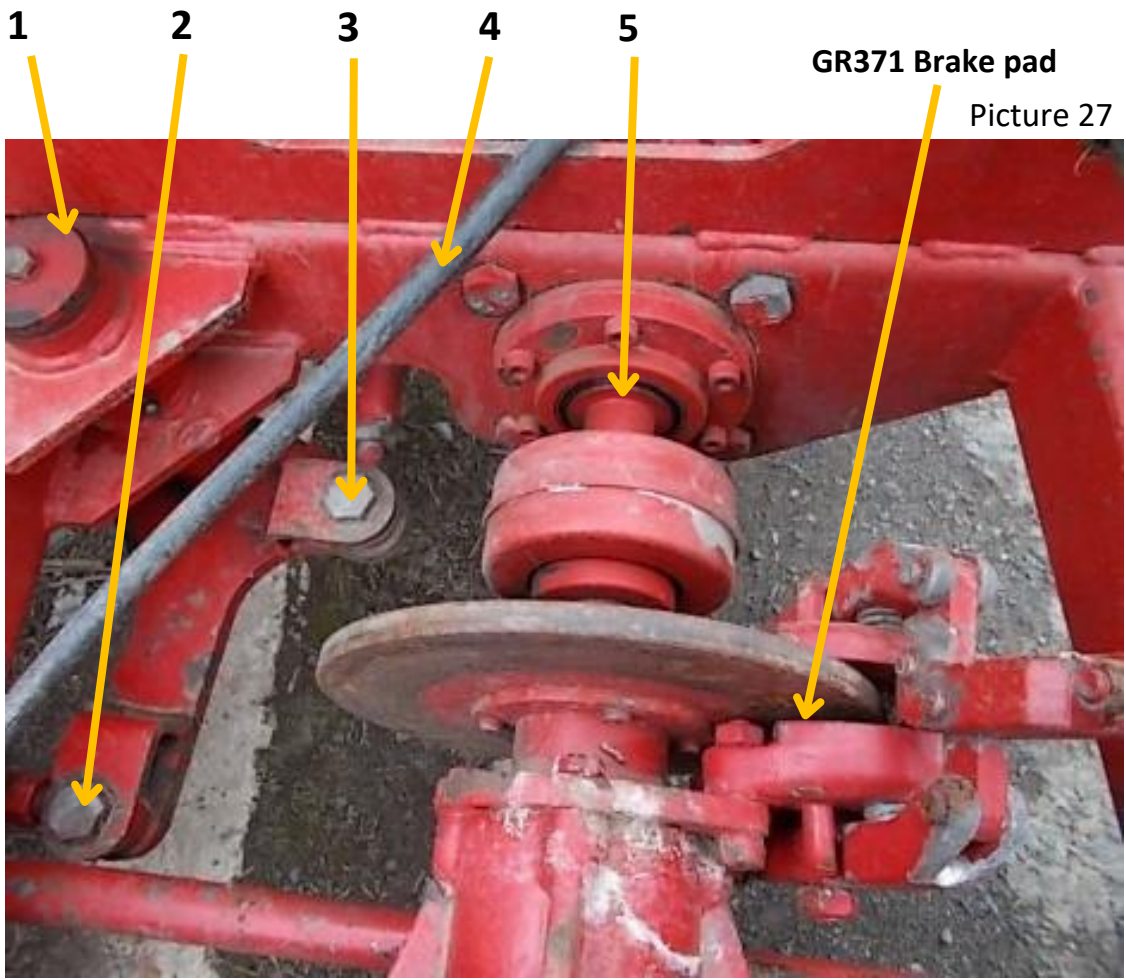
Key  
(stock item)

GR510

Picture 26









1

2

Picture 29



GR364 (23x10.5-12)  
 GR282 (20x8.00-10 4PR)  
 GR408 (20x8.00-10 10PR)

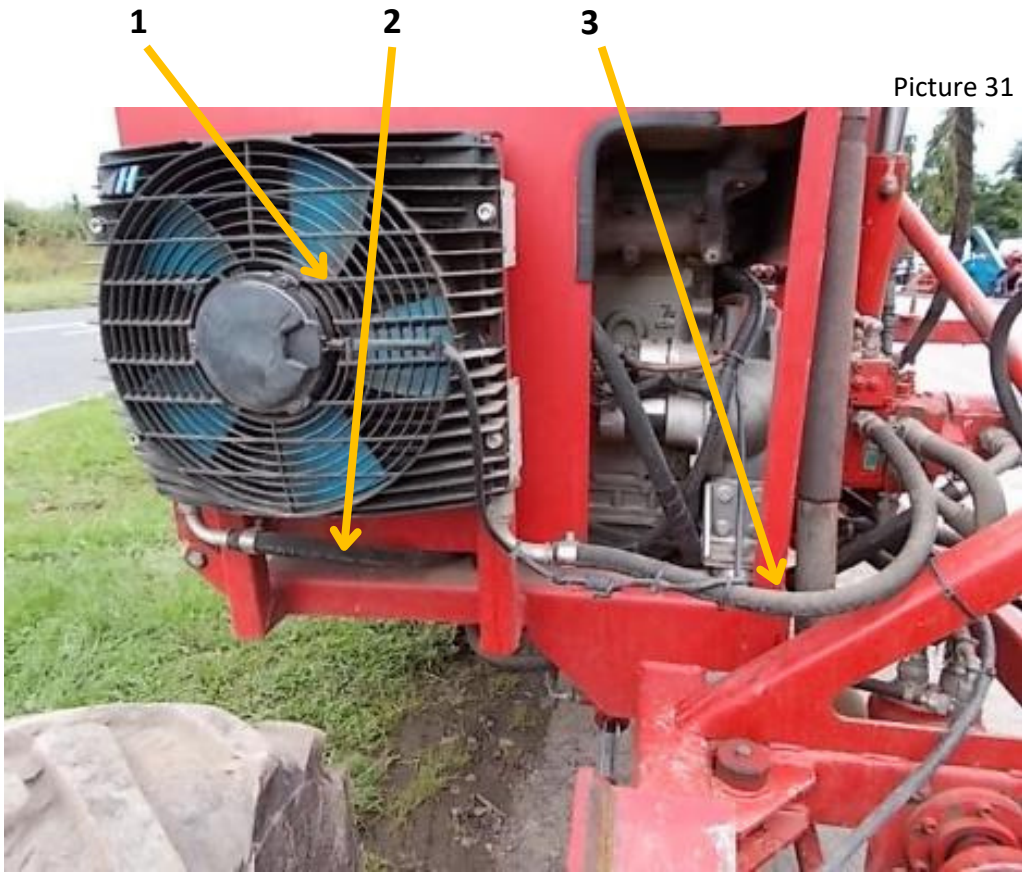
GR345 (for GR408)

GR053 (nut)  
 GR054 (stud)  
 GR501 (bolt)

Picture 30



Picture 31



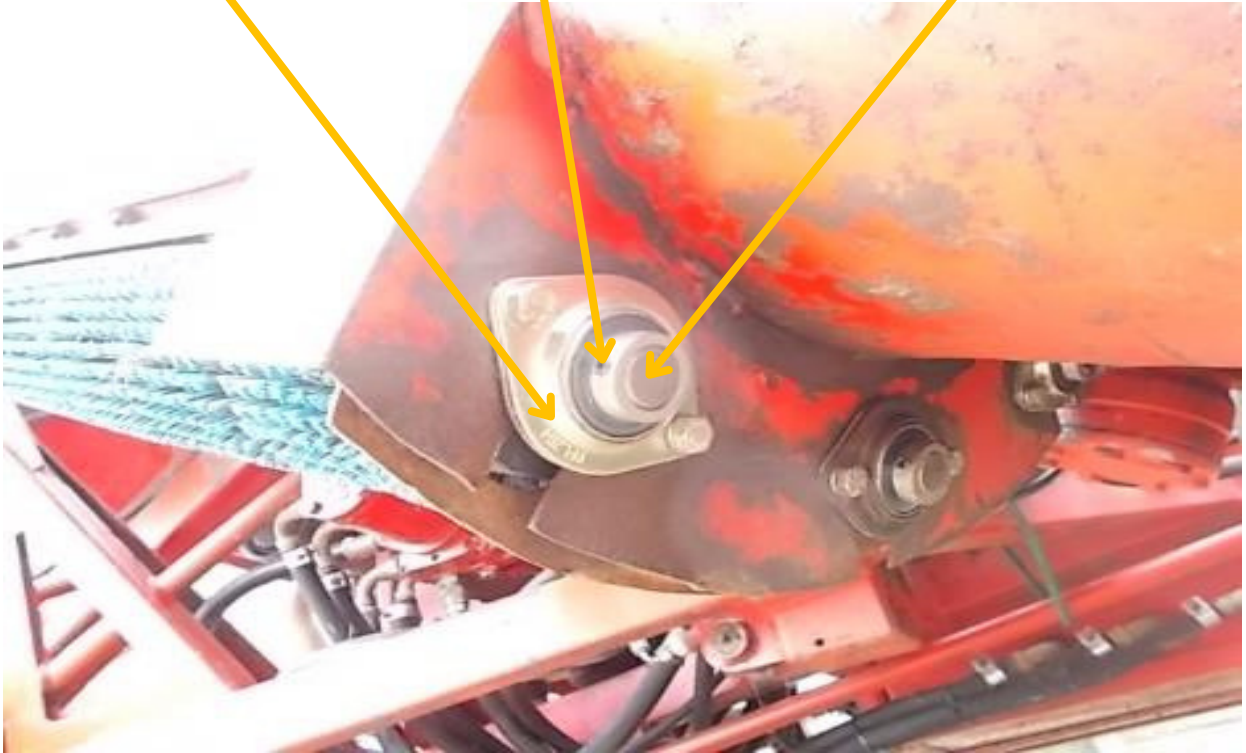


**GR312 (Plates for  
20mm bearing)**

**GR075**

**GR076**

Picture 32



**GR031**

**GR075  
(locking ring)**

**PB-8922**

Picture 33



Picture 34



GR082

1

2

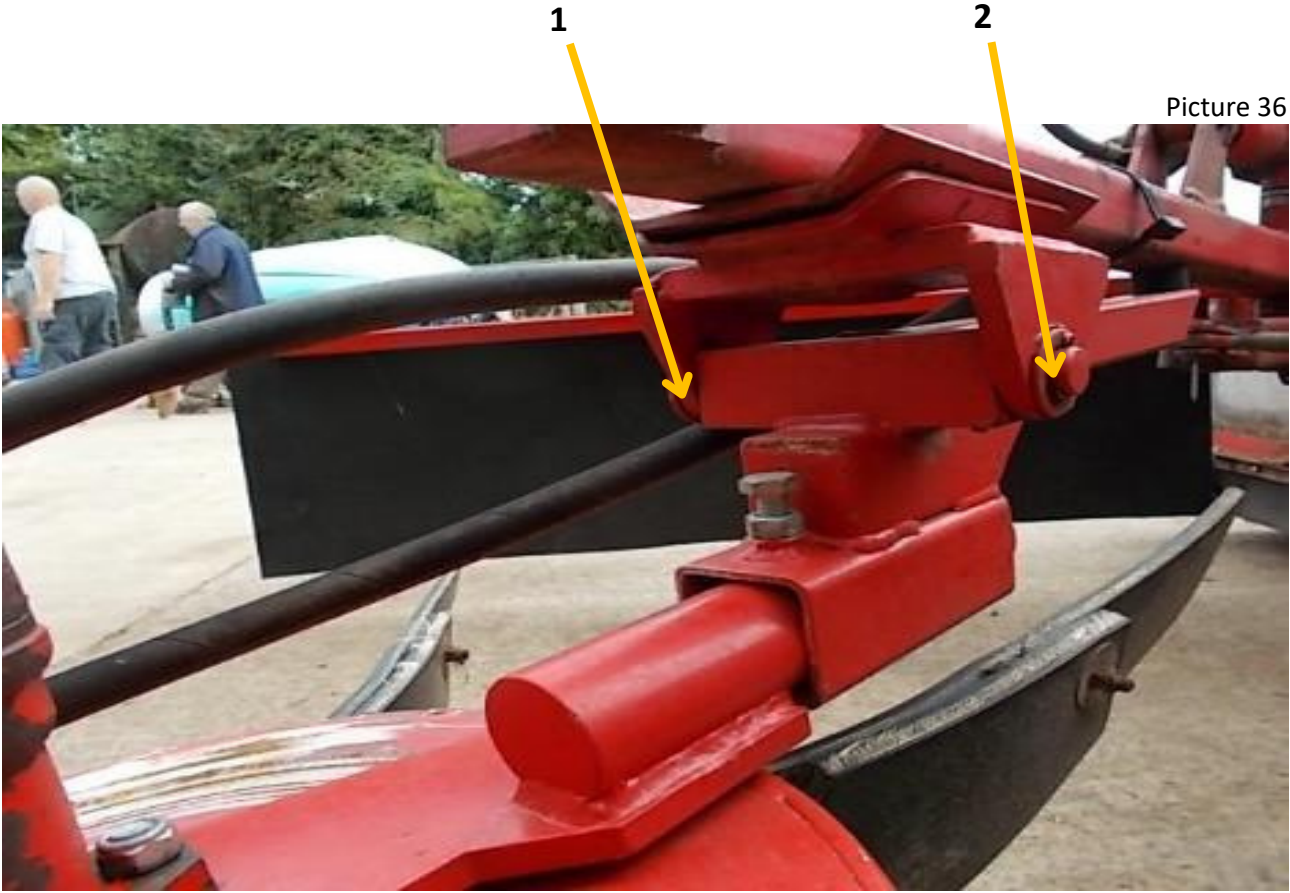
3

Picture 35

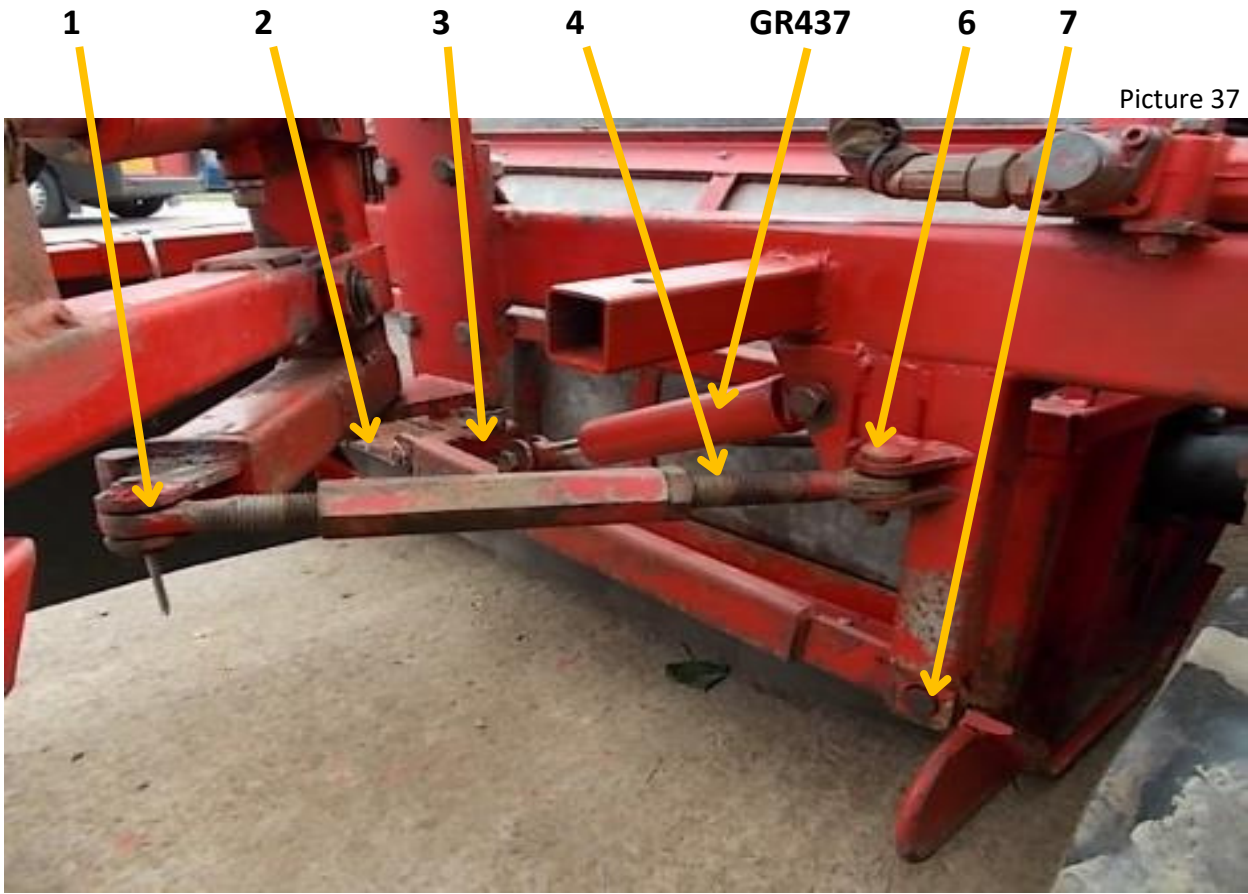


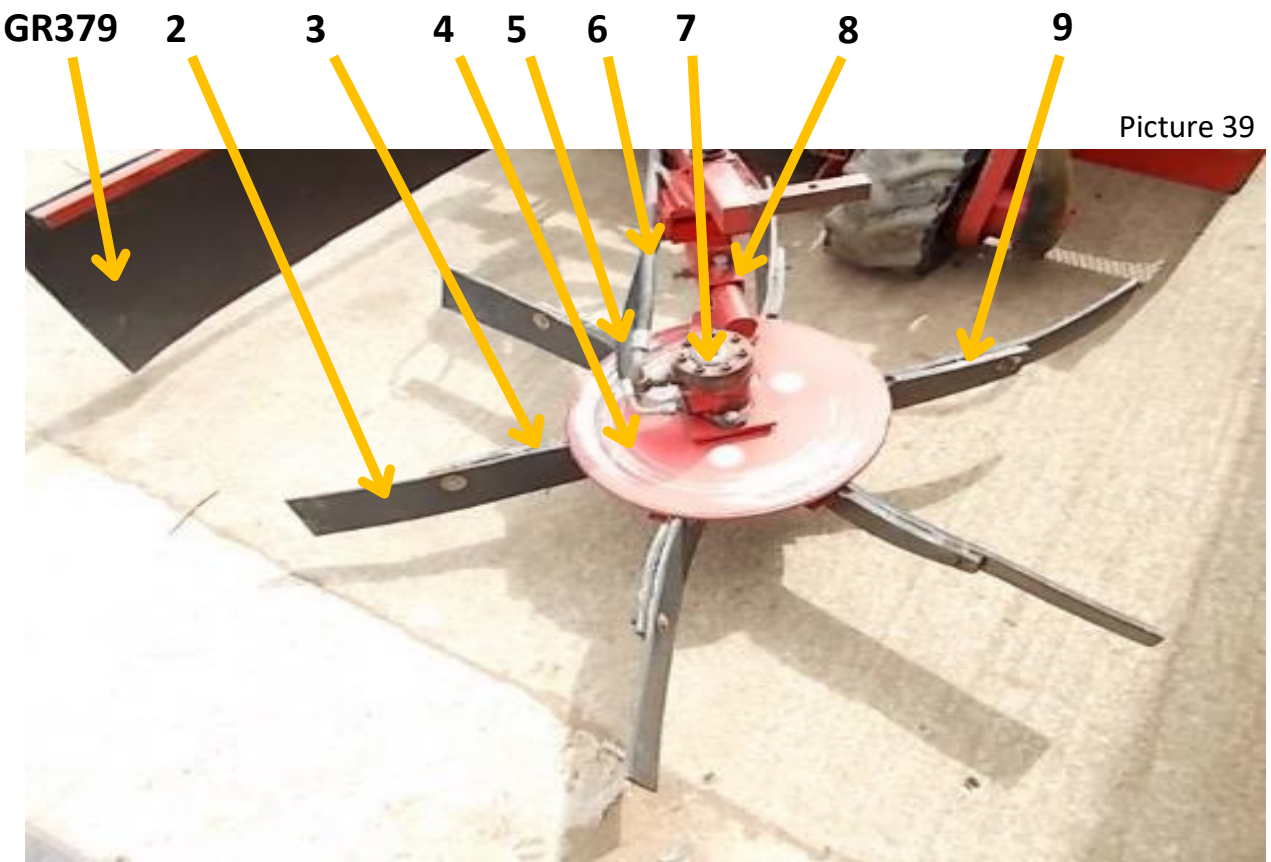
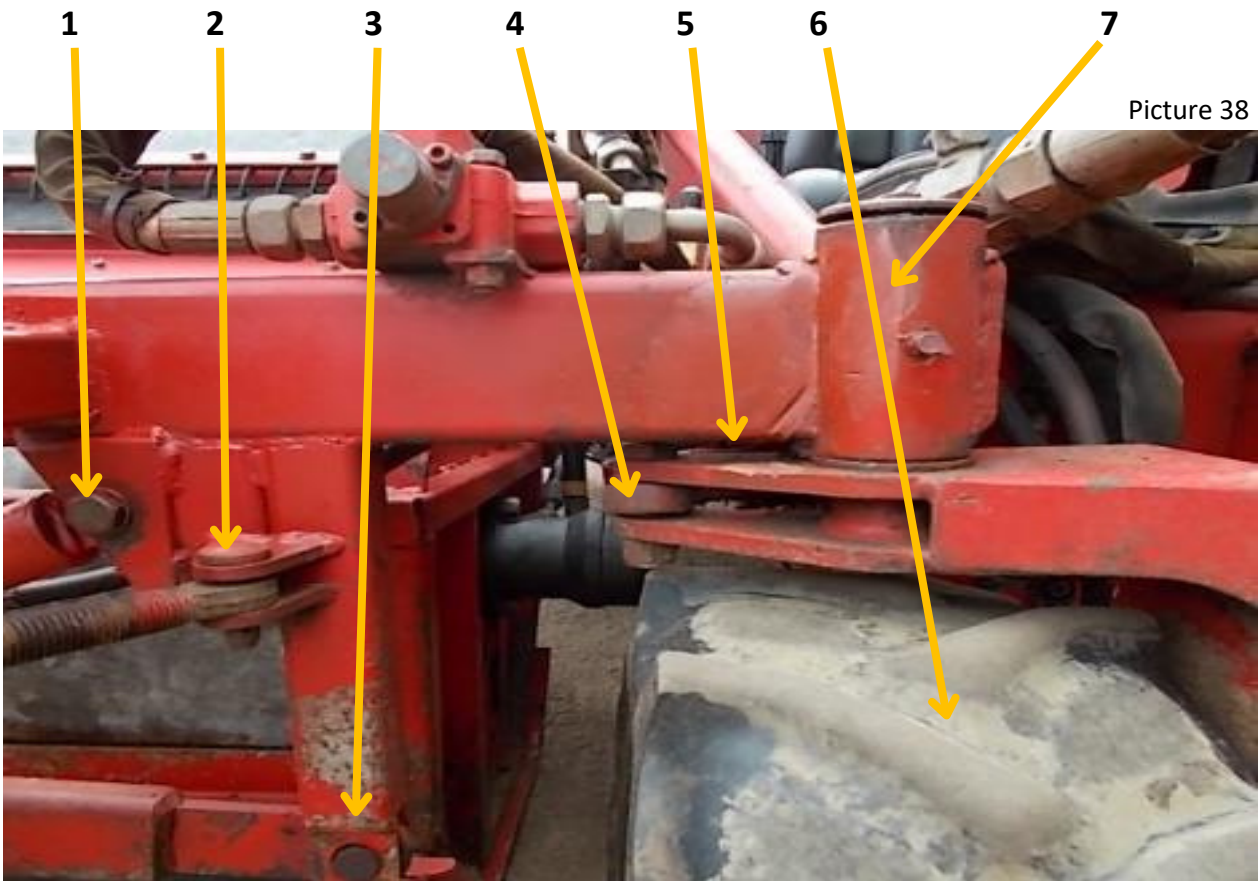


Picture 36



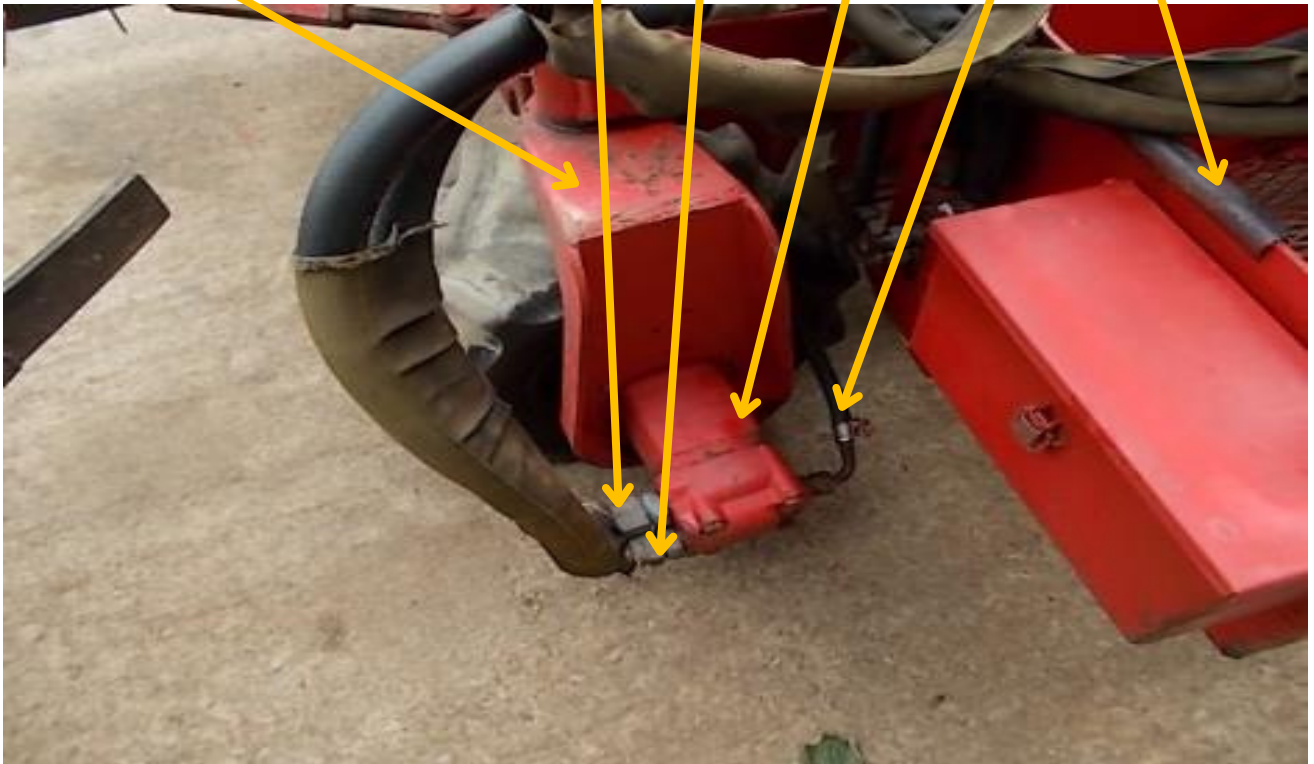
Picture 37



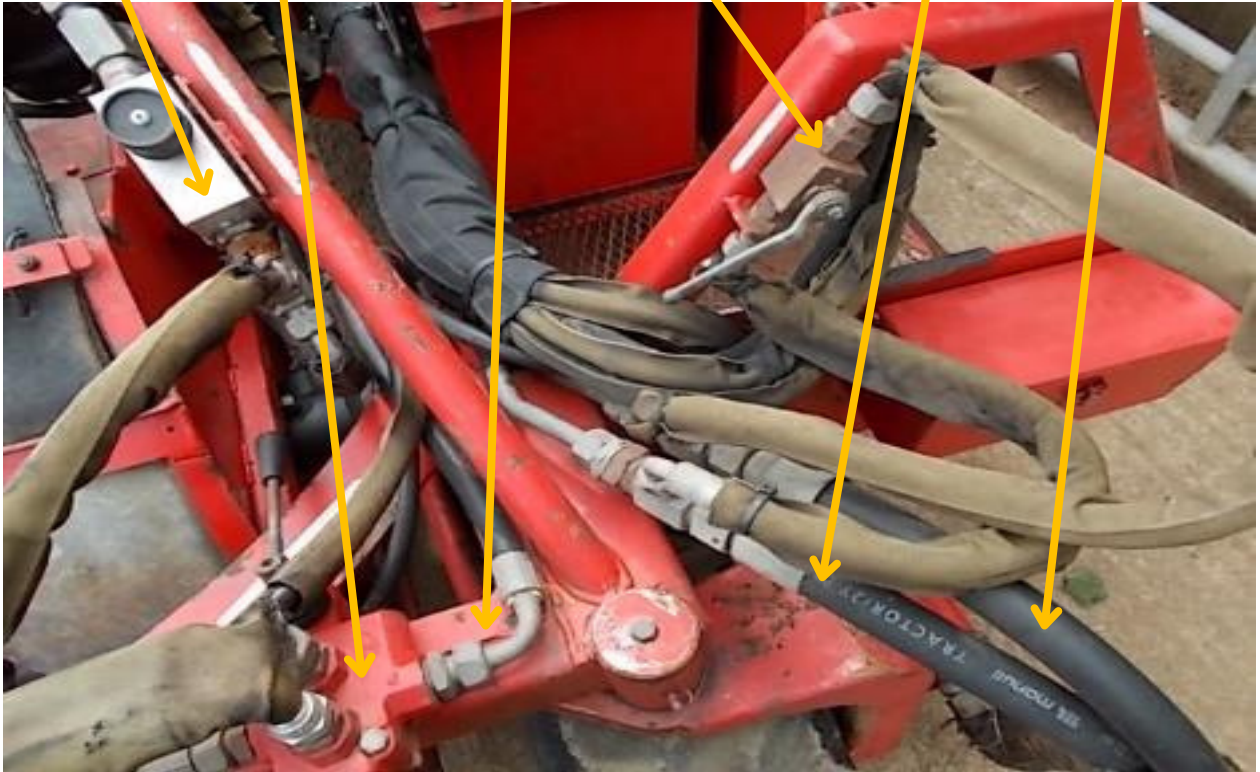




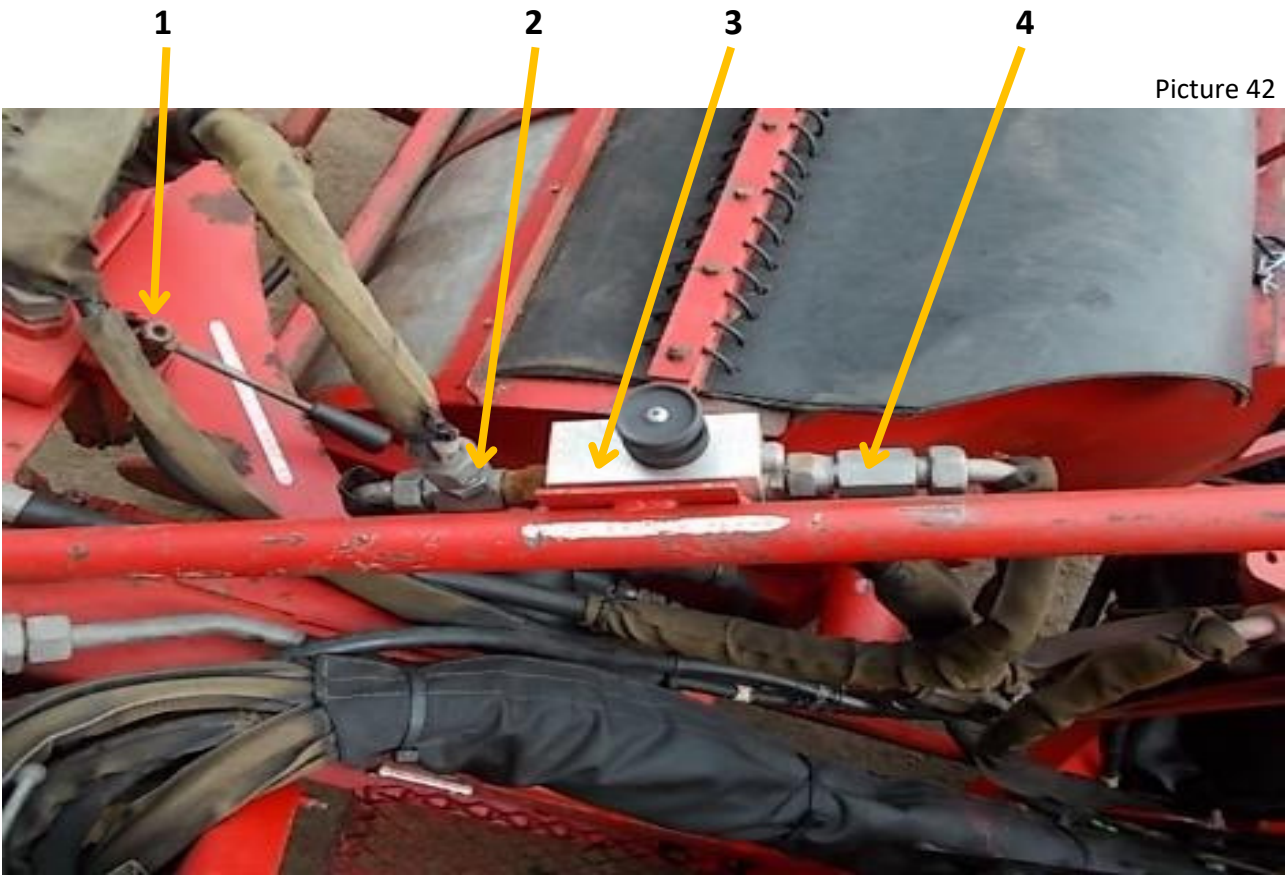
1 2 3 4 5 6 Picture 40



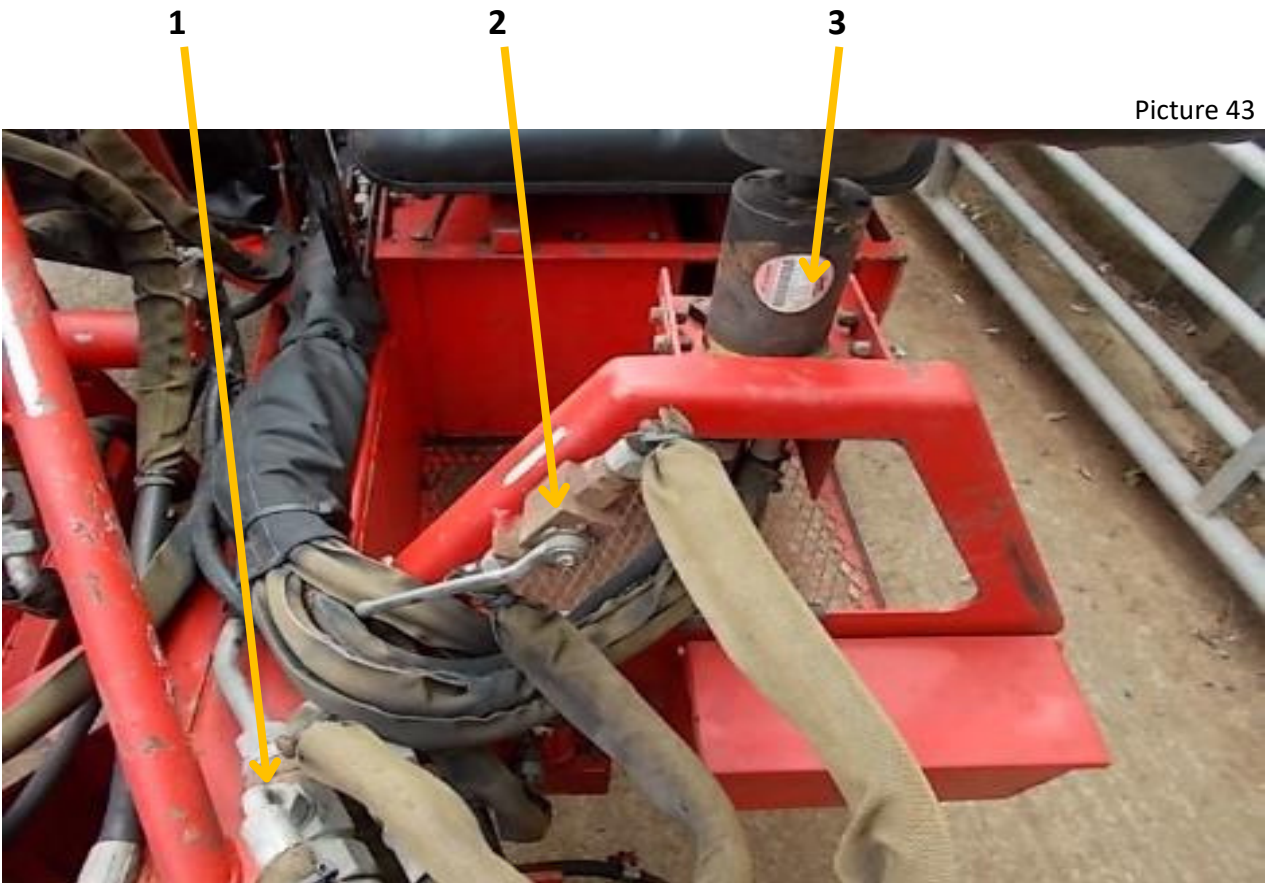
1 2 3 4 5 6 Picture 41



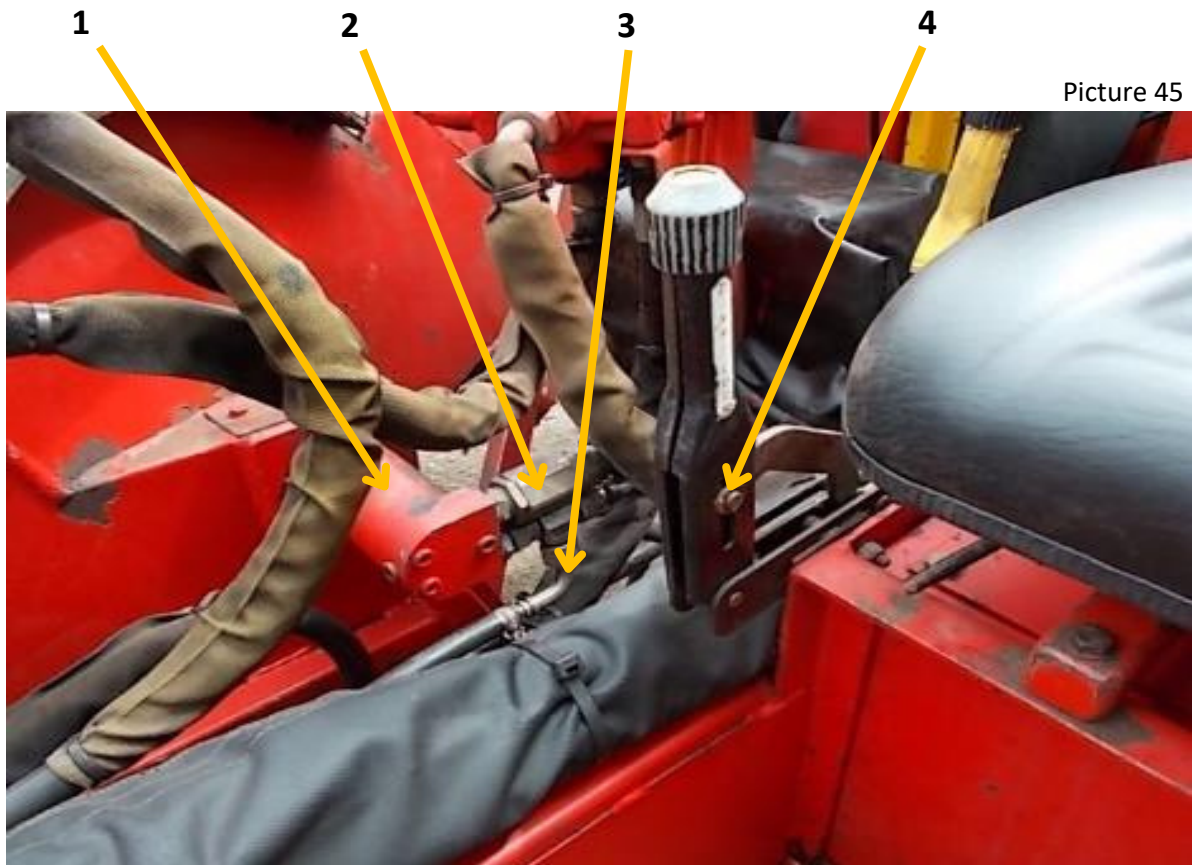
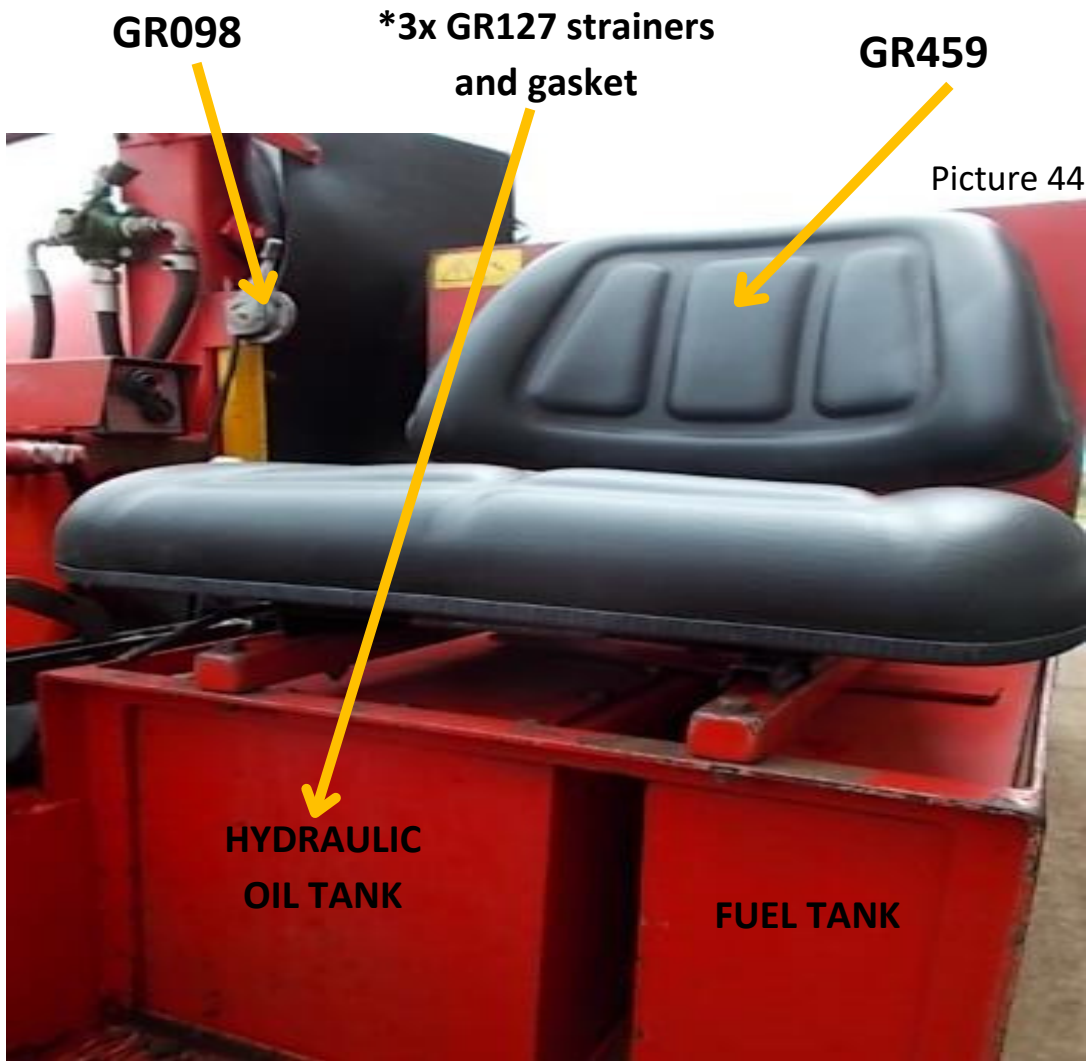
Picture 42



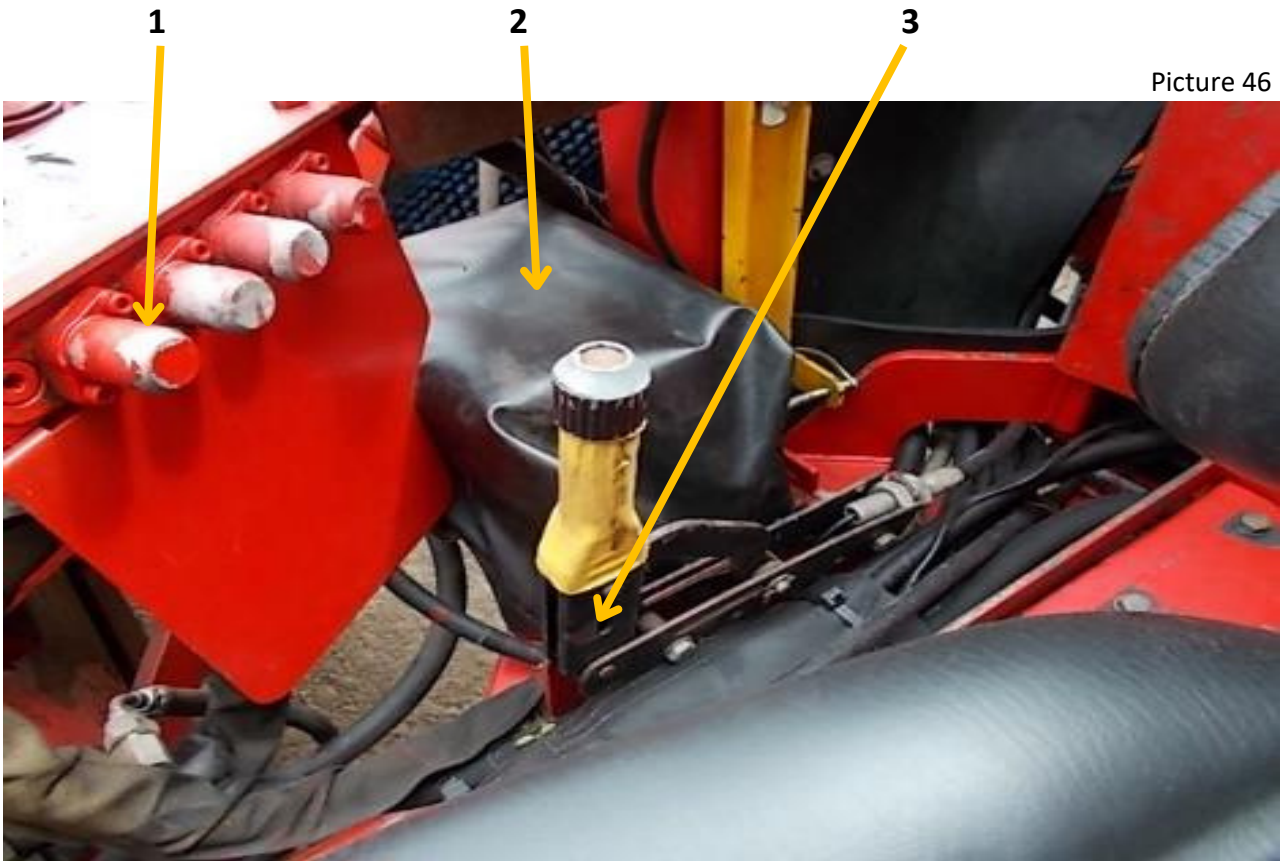
Picture 43



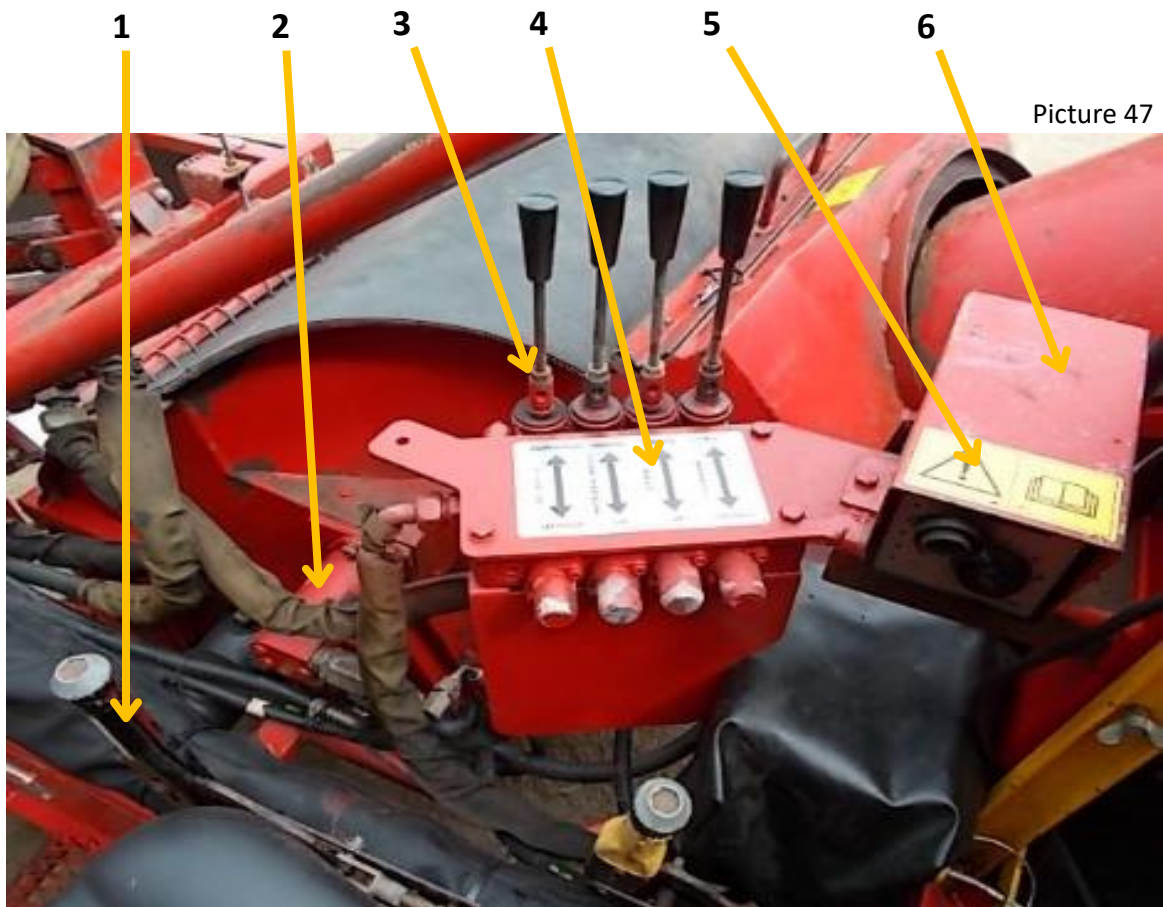




Picture 46

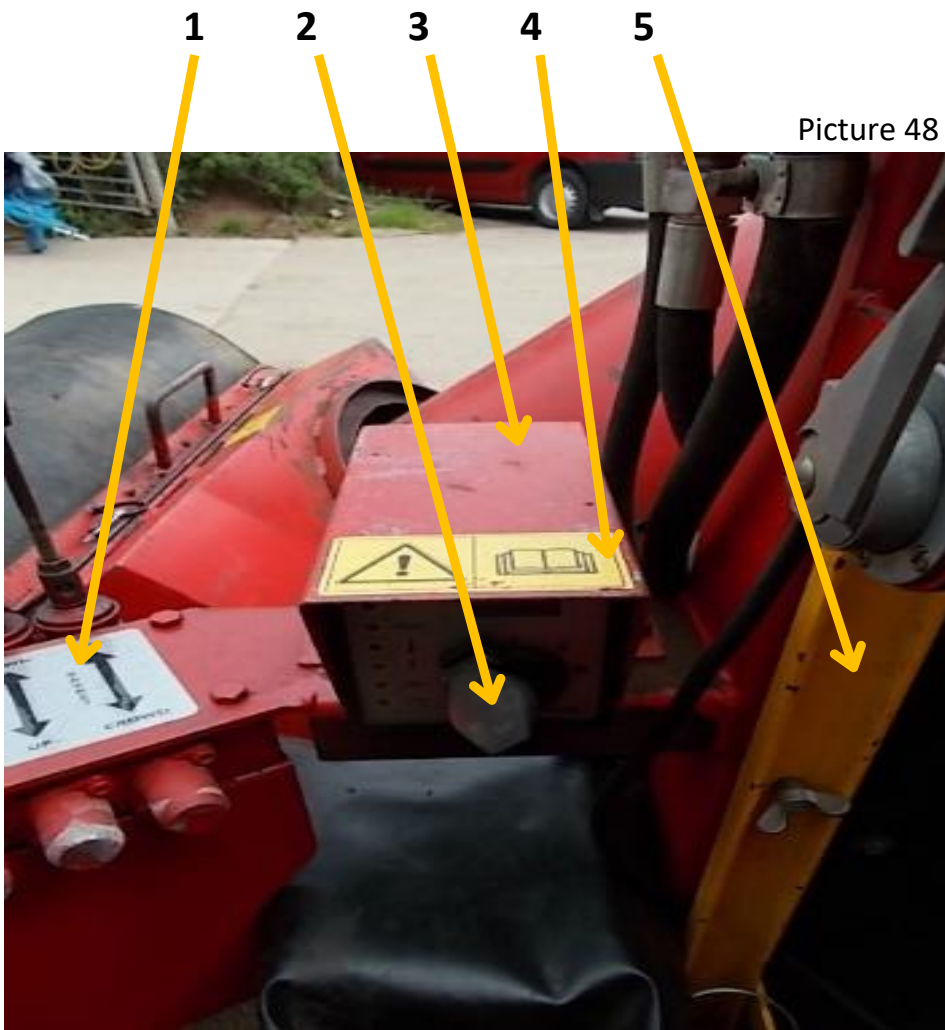


Picture 47



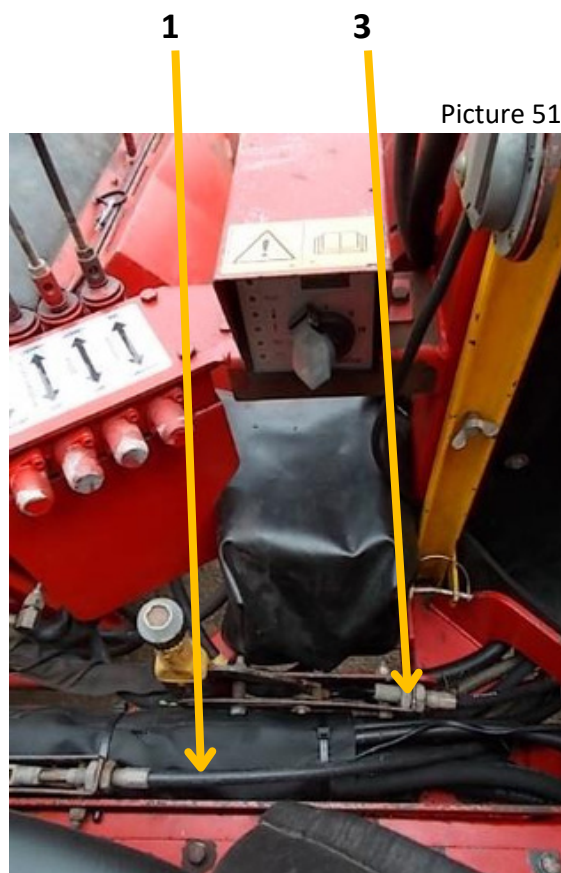
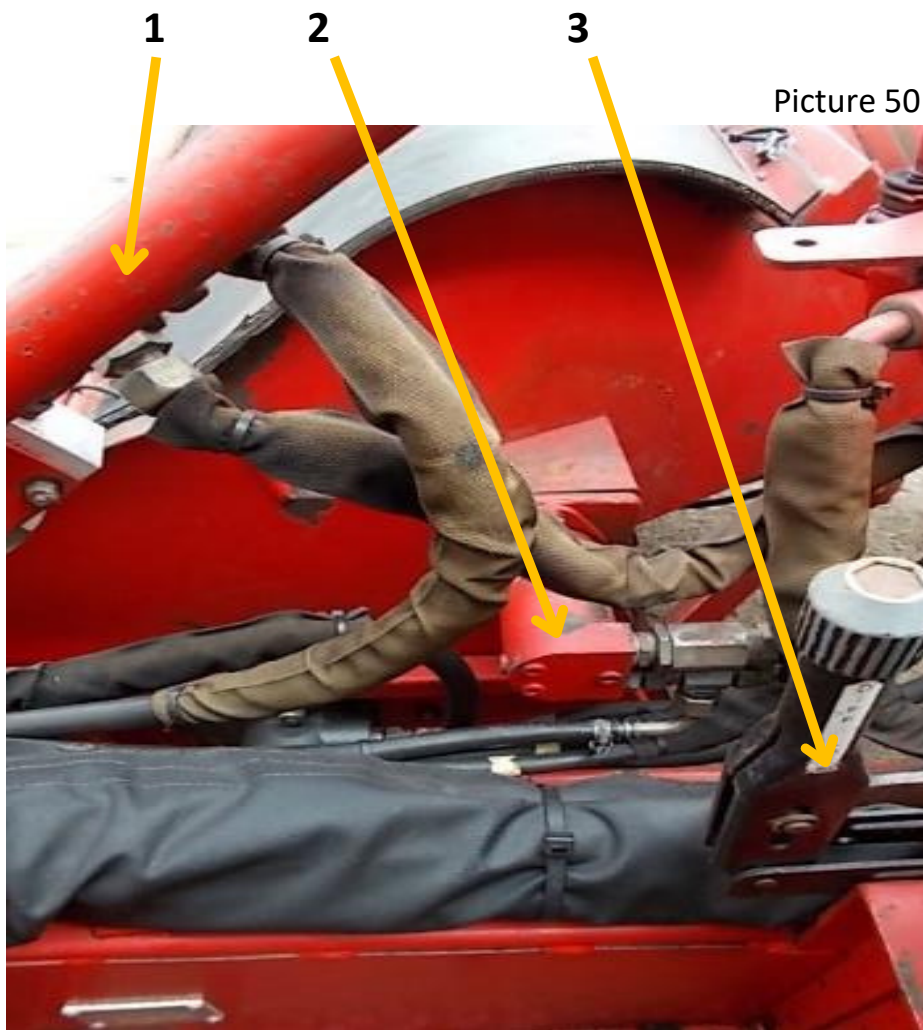


Picture 48



Picture 49







3 4 5 6 7

Picture 52



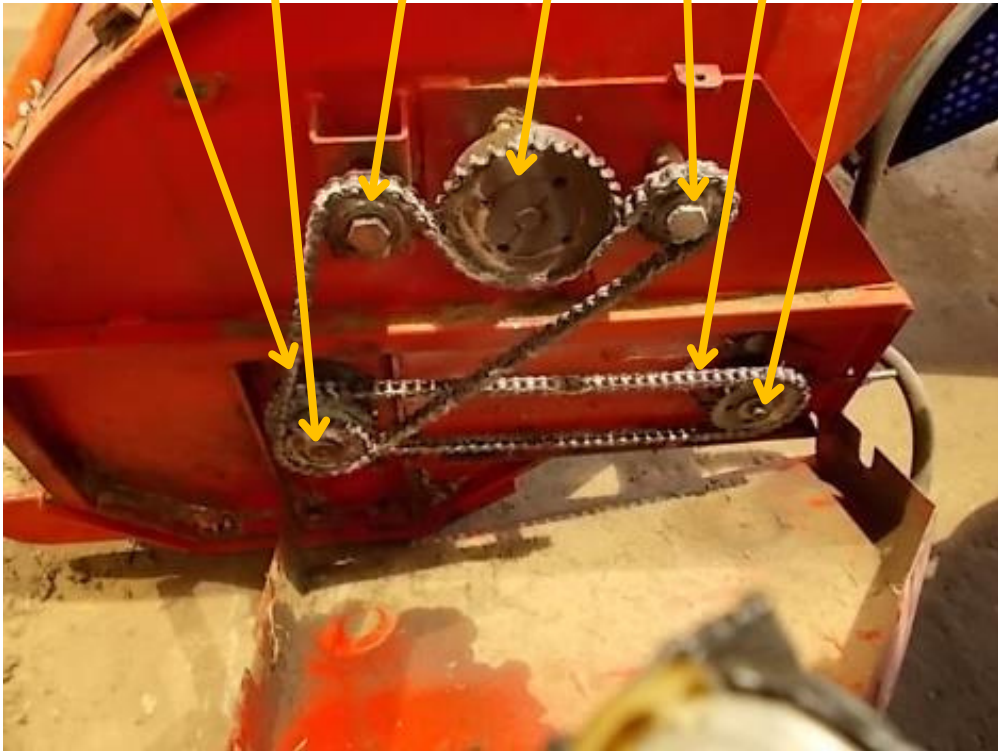
GR030

Picture 53



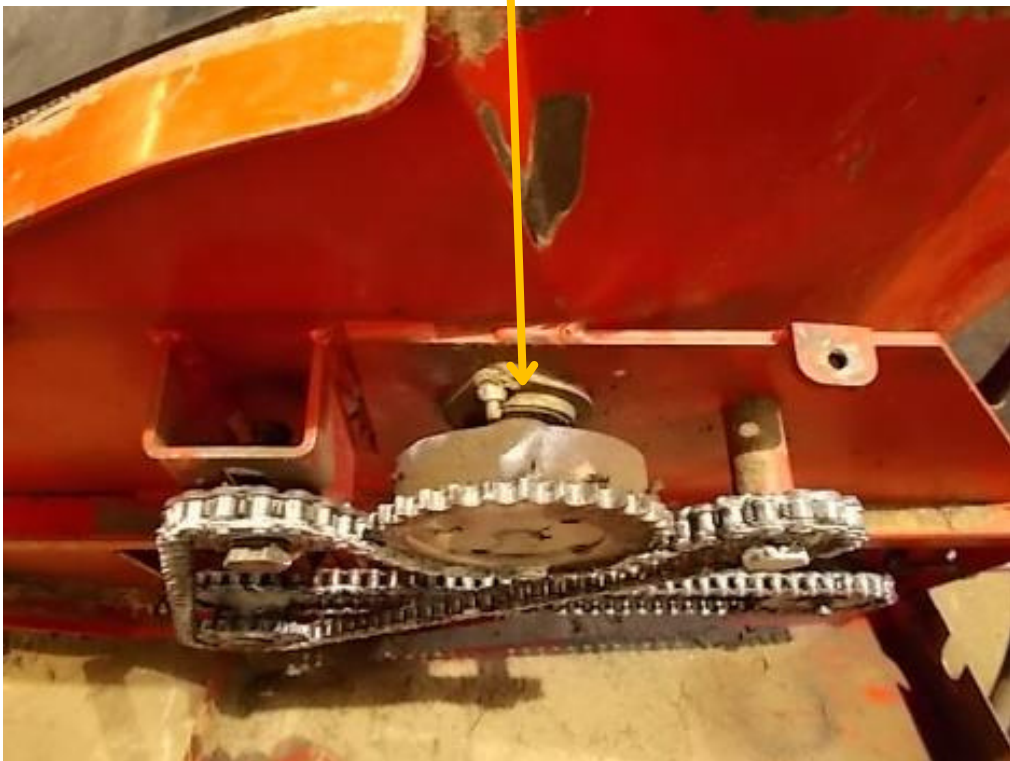
GR052 GR023 GR027 GR025 6 GR051 GR026

Picture 54



1

Picture 55





1

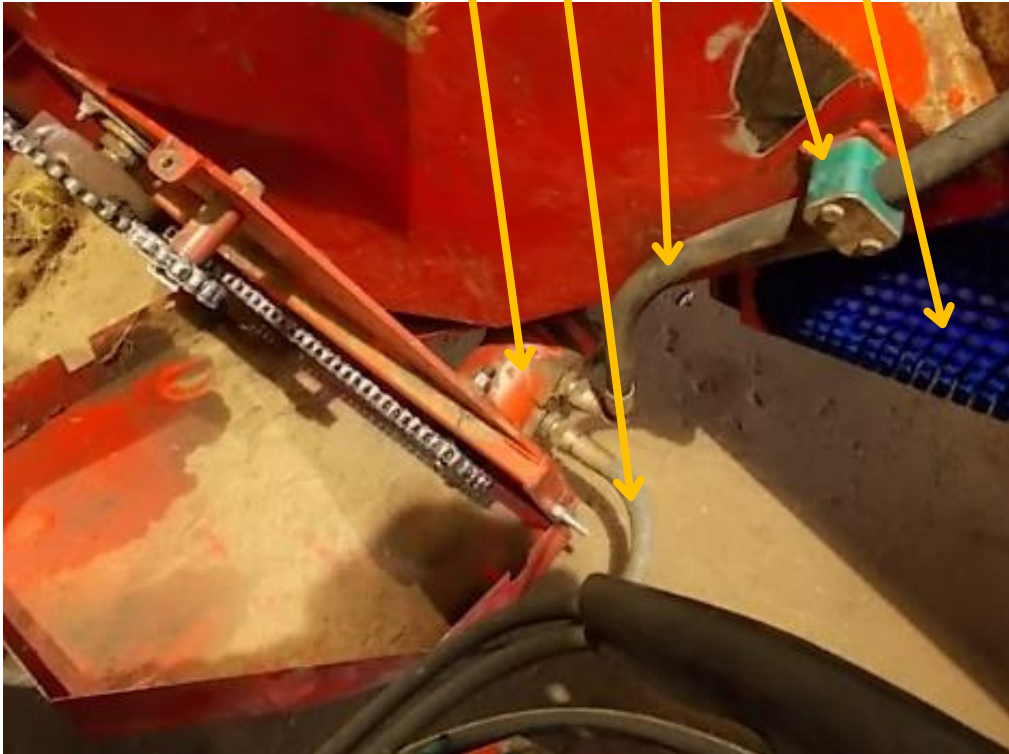
2

3

4

5

Picture 56



1

2

3

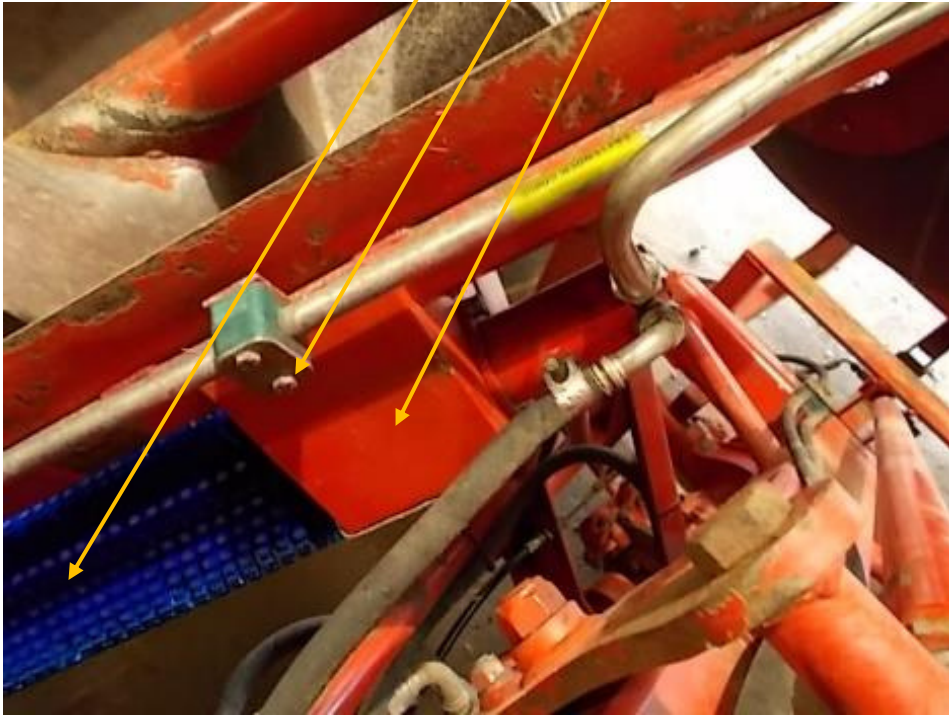
4

Picture 57



1 2 3

Picture 58



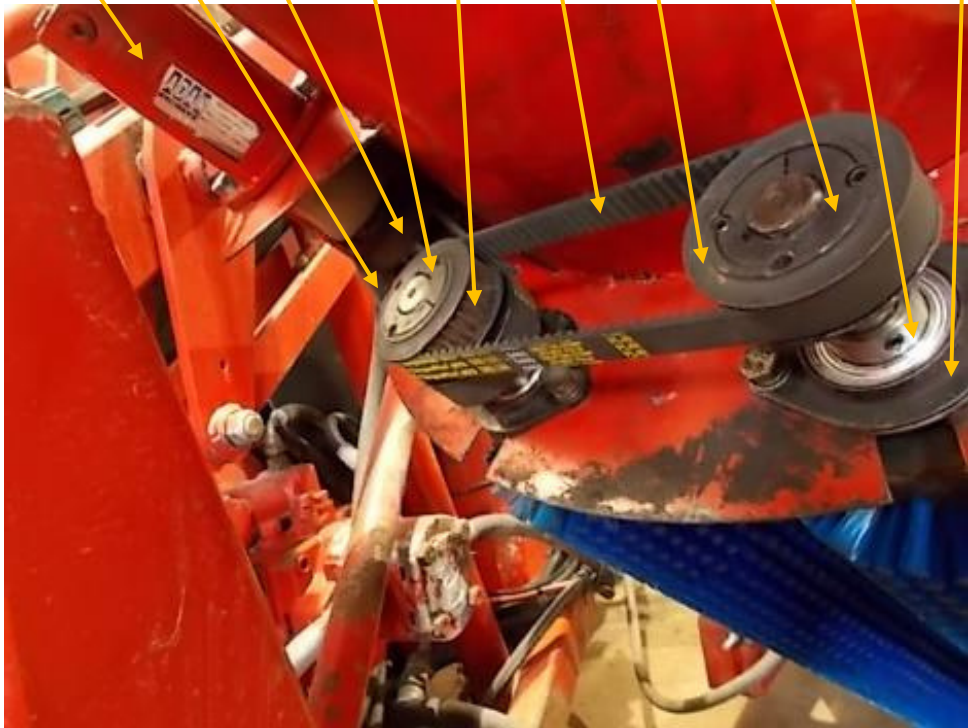
Picture 59





1 2 3 4 5 6 7 8 9 10

Picture 60



1

Picture 61



**GR041**

Picture 62



**PB-8008 >2008**

**PB-8021 2008>**

Picture 63





1 2 3 4 5

Picture 64



1 2 3 4 5 6 7 8 9 10 11 12

Picture 65



1 2 3 4

Picture 66





# BIG WHEEL & CAB

- 1
- 2
- 3
- 4
- 5
- 6
- 7

Picture 67



- 1
- 2
- 3
- 4
- 5
- 6

Picture 68



1

Picture 69



1

2

Picture 70

